

Oxford City Planning Committee Presentation

Reference Number: 24/01397/FUL

**Site Address: The Bungalow, Sandy
Lane**

www.oxford.gov.uk



Site Location Plan

09



LOCATION PLAN
scale 1:2500

www.oxford.gov.uk



OXFORD
CITY
COUNCIL





www.oxford.gov.uk



Site photos – front of site

Photos – looking eastwards



www.oxford.gov.uk



Photo – looking westwards



www.oxford.gov.uk



**OXFORD
CITY
COUNCIL**



Photo - streetscene



www.oxford.gov.uk



**OXFORD
CITY
COUNCIL**



Photo – opposite site



www.oxford.gov.uk

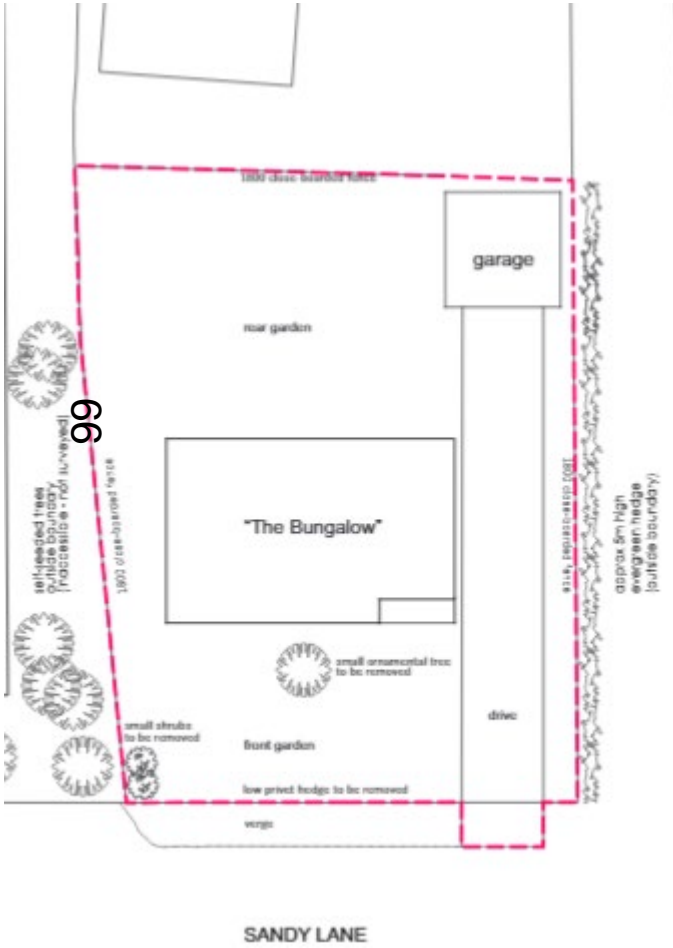


**OXFORD
CITY
COUNCIL**



Existing Site Plan & Elevations

www.oxford.gov.uk

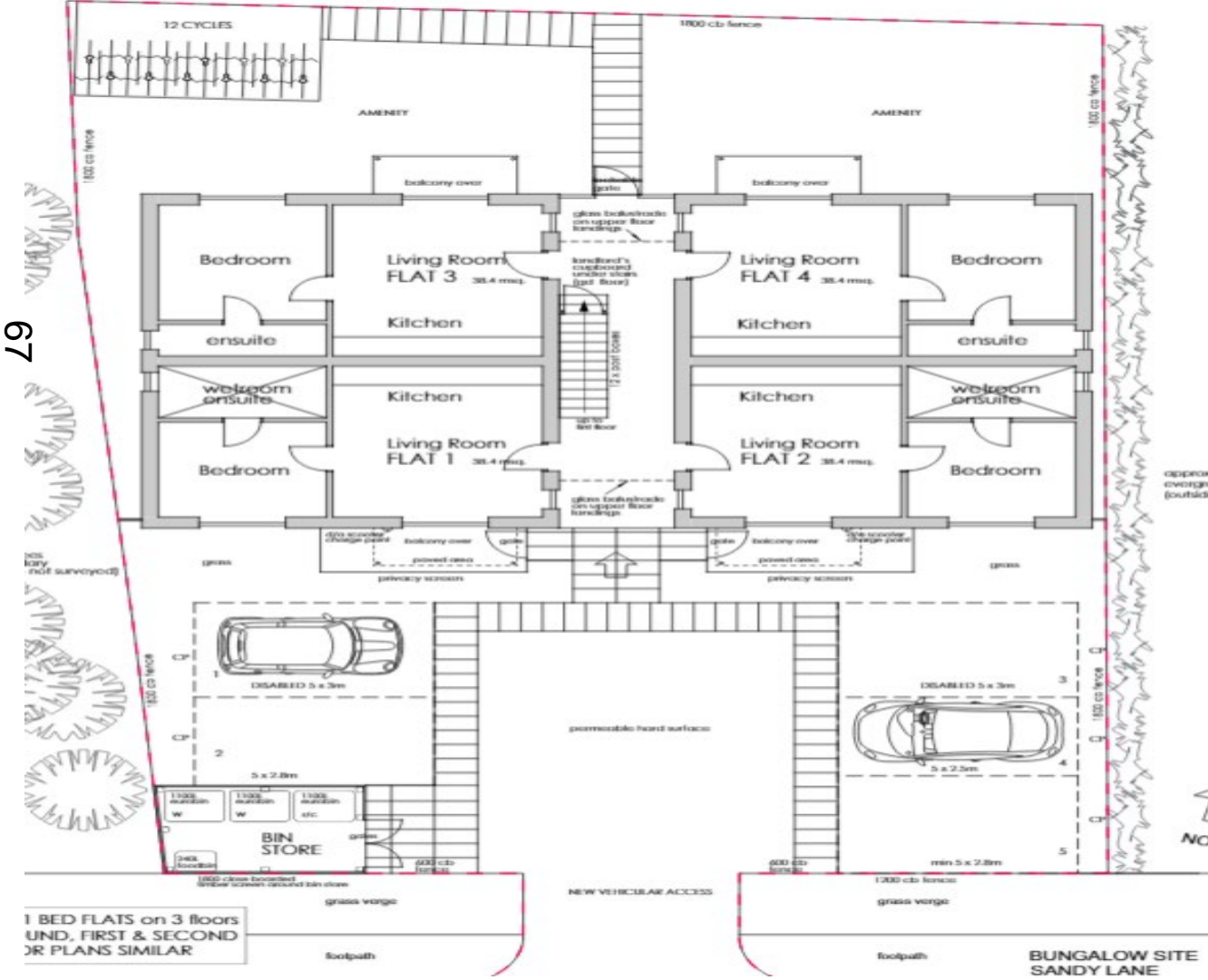


BUNGALOW SITE
SANDY LANE
EXISTING BUNGALOW
& GARAGE

Scale 1:100 (E&S)
Drawn: LW
Date: Area 2014 505R/03



Proposed site plan



67

www.oxford.gov.uk



Proposed Elevations



TYPICAL SIDE ELEVATION
scale 1:200

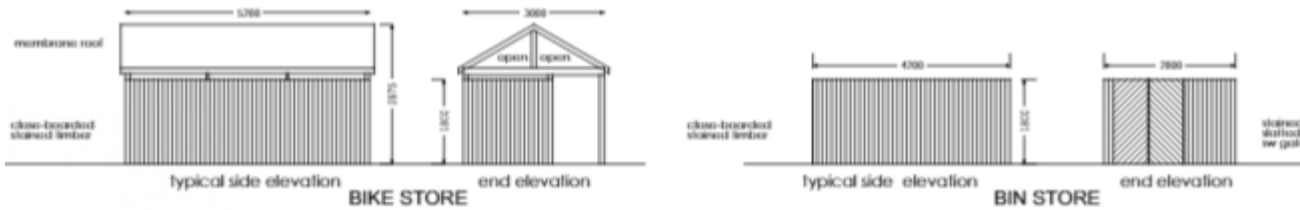


TYPICAL FRONT & REAR ELEVATIONS
scale 1:200



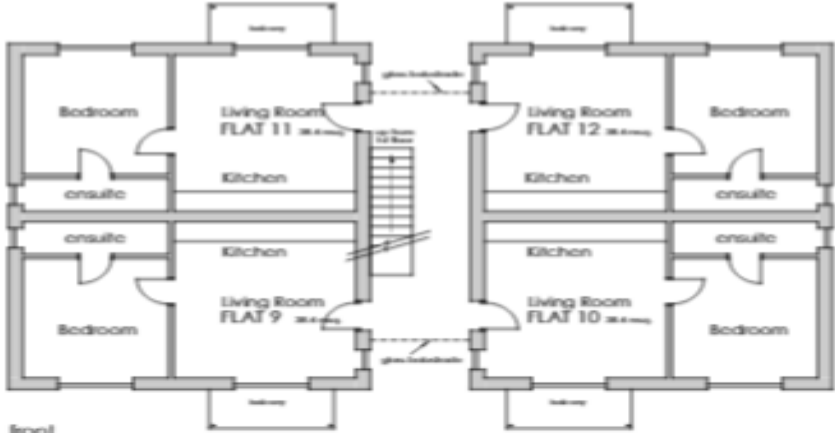
Materials, bin and bike stores

69

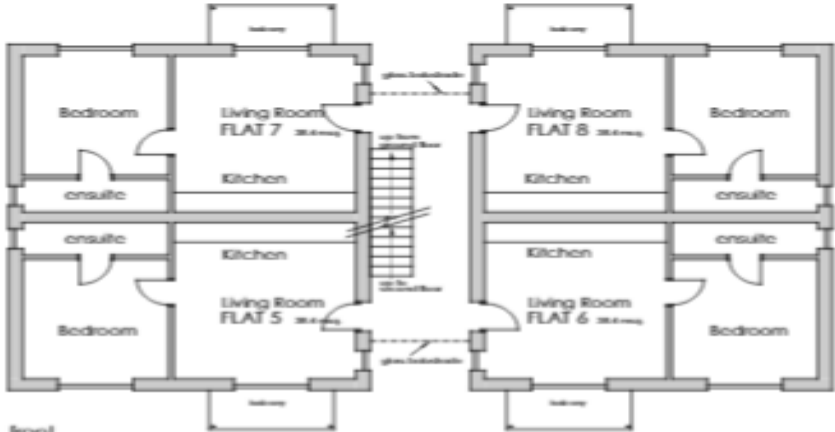


Proposed 1st & 2nd floor plans

70



2ND FLOOR PLAN scale 1:500



1ST FLOOR PLAN scale 1:500

